

STACKHOUSE BY ATE

STACKHOUSE

NEWTON

CANTABRIAN

# STACKHOUSE

EQUIPPING CHAMPIONS FOR OVER 60 YEARS

# 2020

FEATURING



CANTABRIAN®



**Plyometric Box**

Space saving stackable plyo boxes made of welded steel and topped with a 3/8" heavy duty rubber mat. Designed to be wider at the base for better stability. Ideal for leg strength and explosive speed. Powder coated black for long lasting durability.

- STPB6 6" (Not Pictured) UPS 14 lbs. ....
- STPB12 12" UPS 21 lbs. ....
- STPB18 18" UPS 26 lbs. ....
- STPB24 24" UPS 30 lbs. Ships Dimensional.....
- STPB30 30" UPS 34 lbs. Ships Dimensional.....



**Step Training Hurdle**

The step hurdle is a must for any training program. Perfect for agility drills, plyometric drills and jumping drills. One piece PVC construction makes this the best step hurdle on the market. Sold in sets of 6. 2 sizes available.



- TSH6 6" hurdle (set of 6) UPS 6 lbs.....
- TSH12 12" hurdle (set of 6) UPS 8 lbs.....



**Sheet Sled**

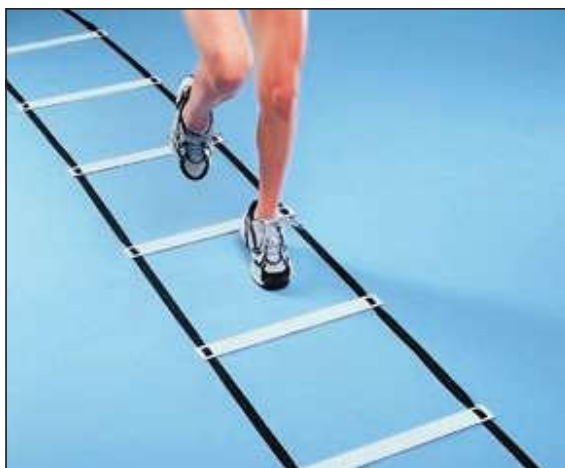
This 33 lb. Sheet Sled is the perfect workout assistant for resistance training. Sled safely holds weighted plates for additional resistance. Shoulder/waist belt fully adjustable for most athletes. Powder coated black.

- SSS UPS 34 lbs. Ships Dimensional.....
- STUNSH Universal Shoulder Harness UPS 5 lbs.....

**2" Saucer Cone**

Colorful, inexpensive field markers. Great plyometric training devices. Carrier available. Can be used on any surface.

- SC2-BL Blue; set of 12 UPS 3 lb. ....
- SC2-OR Orange; set of 12 UPS 3 lb. ....
- SC2-WH White; set of 12 UPS 3 lb. ....
- SC2-YEL Yellow; set of 12 UPS 3 lb. ....
- SC2-COMBO Multiple colors; set of 48; includes metal carrier UPS 8 lbs .....

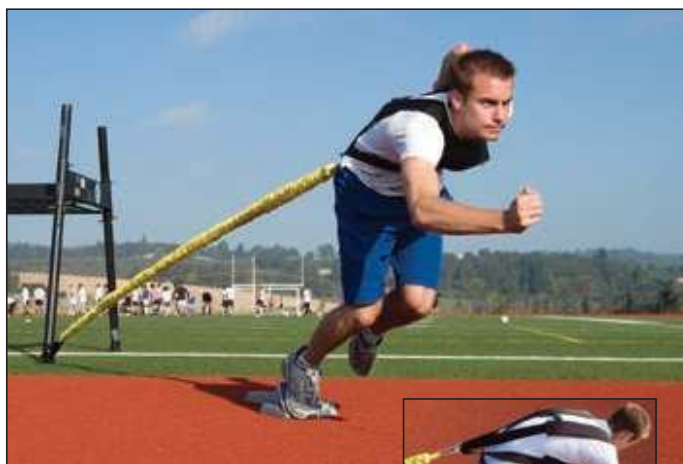


**Flat Rung Agility Squares**

This ladder offers the best training environment of any ladder on the market. Great for indoor and outdoor use. The plastic flat rungs will stay in place even in high winds. Flat rungs also reduce opportunities for ankle injuries. Ladder rungs adjustable for different stride lengths. Comes in (2) 15' sections that can be connected to make one long ladder, or laid side-by-side.

- STASFRA Each; adjustable UPS 10 lbs.....





**“Safety Sleeve”**

The “Safety Sleeve” technology system is used on our overspeed training aids for safety and performance. The elastic cord is encased in a heavy webbing to ensure a safe workout. You will find this system on the following products: **STDOT, STSOT, STA105, and STA150.**



**Accelerator 105**

Great for keeping athletes low out of the start. Perfect acceleration training aid. The 10' safety sleeve elastic can stretch to 30'. Works both forward and backward. Comes in either 105 to 149 lbs. or 150 lbs. and up. Includes Slastix, one universal harness, and one anchor. Ideal for all athletes.

**STA105** 105-149 UPS 5 lbs. ....  
**STA150** 150 and up UPS 5 lbs. ....

**Resistance Trainer**

Simply attach handle/strap assembly to shoulder harness and hold on. This allows the runner the most realistic resistance while running. 10' long strap with no pinch 10" handle connected by durable clip to a universal, fully adjustable padded shoulder harness.

**STRT** UPS 1 lb. ....



**Strap Rung Agility Squares**

Quick footwork for inside and out. Four corners easily tie down. Use as one single ladder or attach side by side for different drills. Clip is midway down ladder to allow for side to side squares or other configurations. 10 yards long. 18" rungs every 17".

**STASSTR** UPS 3 lbs. ....



**Double Man Overspeed Trainer**

This overspeed training device is the safest overspeed trainer you will find. By attaching this device to 2 runners you can overspeed the runner in back with comfort and security. The back runner allows the front runner to stretch the elastic up to 3 times its length. This then allows the back runner to be pulled forward with the help of the elastic. 20' safety sleeve elastic with 2 swivel belts and stretches to 60'.

**STDOT** UPS 6 lbs. ....



**Tandem Tow**

This training aid allows both athletes to run together. Back runner holds back front runner. Athletes can at any time quickly spin around and switch roles going back the other way. 10' long strap with large 3" wide loops at each end.

**STTT** UPS 3 lbs. ....

**Single Man Overspeed Trainer**

Single person overspeed training device. Athlete is attached to anchor and the anchor is attached to a secure object. In order to create resistance the athlete prepares by moving away from the point of anchor. The added resistance pulls the athlete faster forcing the athlete's stride to lengthen and pace to quicken. After the overspeed training device has performed its role, the athlete pulls the quick release strap, and the device separates from him/her. The athlete then tries to maintain that speed and stride beyond the point of anchor. This trainer is 30' long and stretches to 90'.

**STSOT** UPS 7 lbs. ....



**Sprint Chute**

The sprint chute lets you do a full line of exercises, improving acceleration, top speed, strength building and technique. We offer 3 sizes 40", 48" and 60".

**TPC40** 40" UPS 2 lbs. ....  
**TPC48** 48" UPS 2 lbs. ....  
**TPC60** 60" UPS 2 lbs. ....



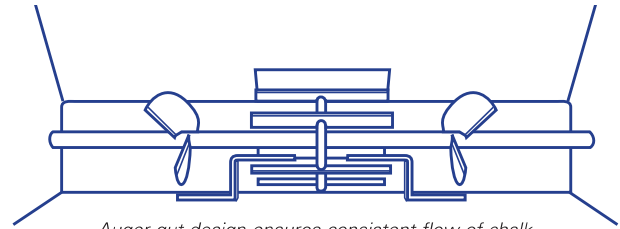
# THE BEST LINERS FOR YOUR PURPOSE AND YOUR BUDGET.

All Stackhouse four-wheel liners (except LPFP50) use a heavy duty, 20 gauge steel body with an attractive powder coated blue finish. The liner body has been designed so that its wedge shape ensures a constant flow of chalk to the bottom of the liner. Our liner gut, which is driven by the liner wheels, has an auger at each end that forces the chalk into a six-bar expulsion wheel which ensures a consistent flow of chalk. A fingertip control allows you to adjust the

thickness of your line and control shut-off of chalk. The liners ride on rubber diamond-tread wheels that use steel hubs and bearings for minimum rolling resistance. The liners offer both a 2" and 4" line for baseball, football, and soccer fields. These features, combined with the 5 models we offer, allow you to pick the best liner for your purpose - within your budget.



ON ALL  
STACKHOUSE LINERS



Auger gut design ensures consistent flow of chalk



A



B

### A. Line Ranger 50

**BEST SELLER!**

This heavy duty, 50 lb. capacity liner is ideal for lining multiple baseball fields. 10" pneumatic wheels give a smooth rolling ride for easy field lining. 2" to 4" line. Powder coated.

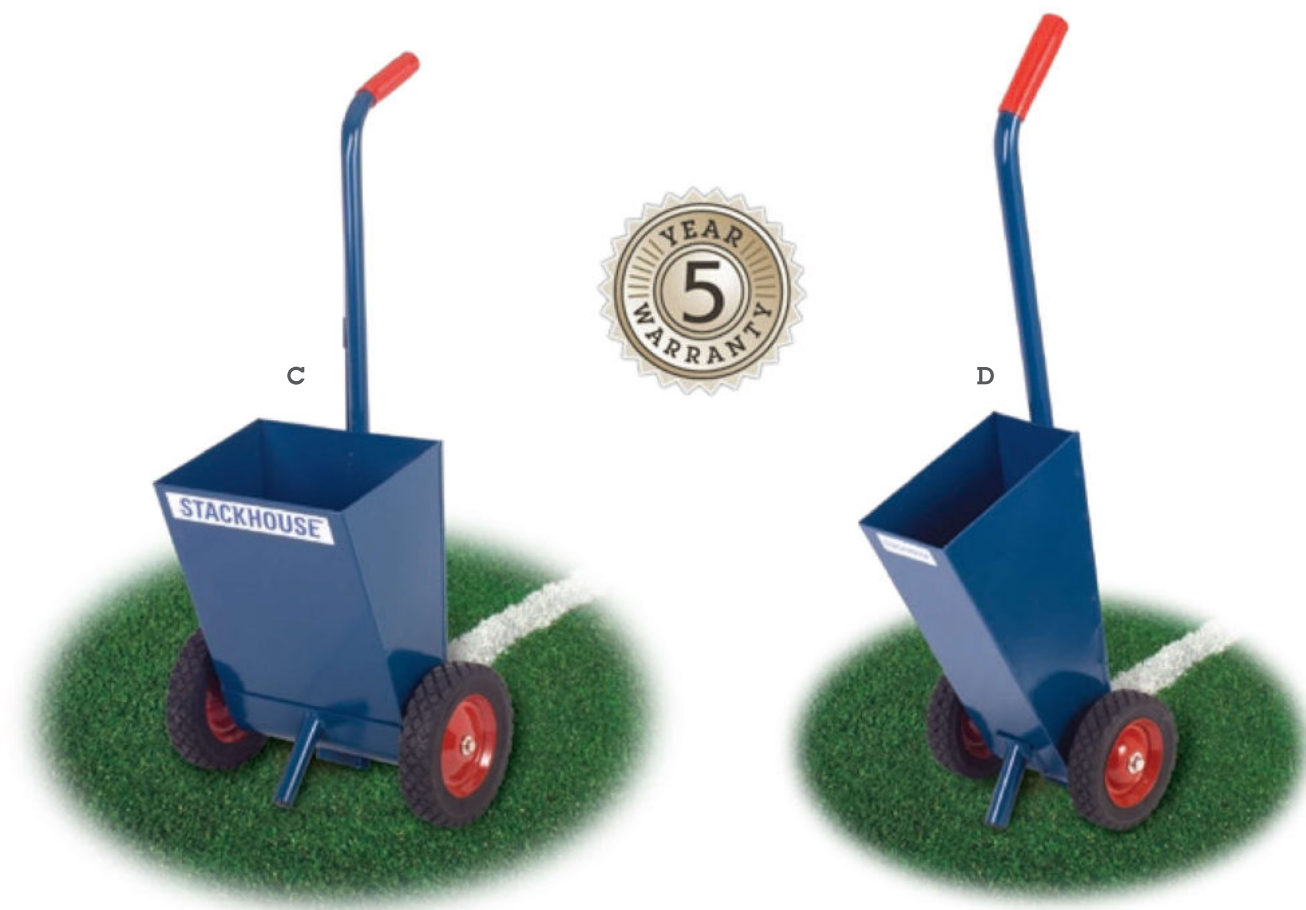
LR50 UPS 54 lbs. Ships Dimensional.....

### B. Genie 50

**BEST SELLER!**

Our most popular liner! This 50-pound capacity liner rides on four 8" wheels. This liner is designed for the school on a budget and offers all the quality and durability of the bigger liners. Ideal for football and baseball fields. 2" to 4" line. Powder coated.

LG50 UPS 58 lbs. Ships Dimensional .....



**C. LTW-25 Liner**

**BEST SELLER!**

Our most popular baseball field liner! This economy-priced liner with its 25-pound capacity, 2" line, and fingertip shut-off and flow control has long been the favorite of baseball coaches. Its 25-pound capacity lets you line a baseball diamond with one filling of chalk. The LTW-25 rides on two 8" wheels and will give years of trouble-free service. Powder coated.

LTW25 UPS 25 lbs. [REDACTED]

**D. Roustabout 200**

**BEST SELLER!**

Every school needs this liner for line touch-ups and small jobs of baseball baselines, track and field events, tennis, parking lots and physical education play fields. Rides on two 6" wheels and has 2" line. The 10 to 15-pound chalk capacity can produce a 200 yard line. Powder coated.

LRB200 UPS 12 lbs. [REDACTED]

**Spray Liner**

This lightweight portable aerosol applicator saves time and labor. Athletic fields can be striped and decorated with ease. Create crisp, sharp stripes in widths from 2" to 4". 10" wheels. Holds 12 extra cans. Powder coated.

LSSL UPS 20 lbs. [REDACTED]  
Ships Dimensional..... [REDACTED]

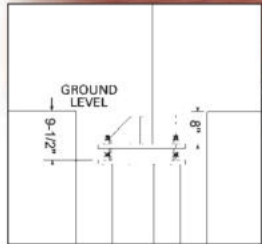
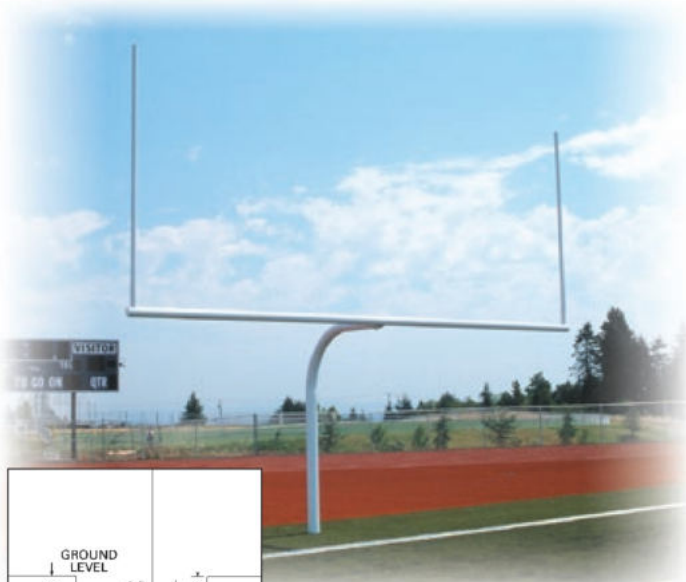


**Economy Spray Liner**

For touch-ups and small jobs. Easy to use liner gives excellent results with little cost.

LSE UPS 3 lbs. [REDACTED]





**Semi-Permanent Gooseneck Offset Goal Post**

Upright is 10' high, 4 1/2" O.D. steel pipe. Crossbar is 3 1/2" O.D. steel pipe. Uprights are 2 1/4" O.D. Semi-permanent goal allows you to remove gooseneck from ground sleeve for multiple use fields. (See insert photo). All steel goalposts have 5' offset. Upright is cemented into ground for permanent installations. Powder Coated.

- FGNGP20** Pair; college 18'6" crossbar; 20' aluminum top uprights  
 Class 70, 1053 lbs
- FGNGPH** Pair; high school 23'4" crossbar; 10' steel top uprights  
 Class 70, 1365 lbs
- FGOAL-20** 20' aluminum uprights Class 70; 100 lbs...

**Permanent Gooseneck Goal Post**

- FPGHS** Pair; high school 23'4" crossbar, 10' steel top uprights  
 Class 70, 1050 lbs
- FPGC** Pair; college 18'6" crossbar, 20' aluminum top uprights  
 Class 70, 800 lbs
- FGOAL-20** 20' aluminum uprights Class 70; 100 lbs...
- FGOAL-YW** Yellow paint goal post option

**Wind Directional Flags**

Made of durable, UV resistant, bright orange material. These 3" x 42" wind flags can be seen clearly from every direction. Brass grommet on one end of flag for easy attachment to top of upright.



- FGST-P** Set of 4 UPS 1 lbs...



**Football Corner Pylons**

Orange vinyl covered foam mounted on a spring shaft. Removable from a ground cup. Superior to a corner flag for accuracy and safety.

- FCP** Set of 4 UPS 6 lbs.....

**Weighted Football Corner Pylons**

Self standing, no ground sleeves, superior safety. Vinyl cover over foam weighted bottom. Suitable for winds up to 25 mph.

- FCPW** Set of 4 UPS 14 lbs. ....

**NOW 8' OFFSET OPTION**

**Aluminum Gooseneck Goal Post**

Quality aluminum; 5 1/2" gooseneck, 4" crossbar, 2 1/2" uprights. An excellent choice for a new field or to modernize your old field. We offer both college 18'6" width and the high school 23'4" width. Uses a ground sleeve so that goal may be removed from field. Powder coated.



- FGPH-AL** High school; 23'4" crossbar (standard offset 6')  
 20' Aluminum top uprights Class 70, 750 lbs.....
- F8GPH-AL** High school; 23'4" crossbar (8' offset);  
 20' Aluminum top uprights Class 70, 770 lbs.....
- FGP20-AL** College; 18'6" crossbar (standard 6' offset);  
 20' Aluminum top uprights Class 70, 735 lbs.....
- F8GP20-AL** College; 18'6" crossbar; (8' offset)  
 Class 70, 755 lbs .....
- FGOAL-YW** Yellow paint goal post option .....

**Football/Soccer Combination Goal**

Goals made with a 2" x 4" face and have 10' x 2" uprights. Goal opening is 24' x 8'. Face of goals mounted 4' into ground for better security and strength. Backstays for soccer made of 1 3/8" steel pipe. All steel construction and brilliant white finish give this combo goal the long lasting durability you need. Powder coated.



- FSCG** Pair Class 70, 750 lbs.....

**Formed Goal Post Pads**

Form-fitting goal post pad takes natural shape of goal post. Reinforced 18 oz. vinyl combined with high density 3" foam and velcro attachment make this 6' pad one of the best. (Up to 6" post).

- FGP-4** Pair UPS (2) at 20 lbs, each  
 Ships Dimensional.....

**Goal Post Pads**

Reinforced 18 oz. vinyl covering filled with thick, high-density 2" foam, uses velcro belt for attachment. 6' tall. (4" - 6" post).

- FGPP** Pair UPS (2) at 20 lbs, each  
 Ships Dimensional.....

**Silk Screen 6" to 10" Letters**

- WPL** Per letter .....



FGP-4

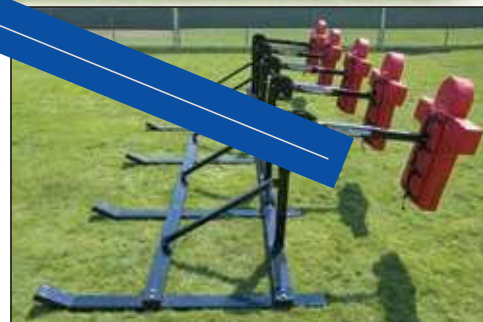
FGPP



**Triple Threat Football Sled**

(Lineman drills - Running back drills - Receiver drills)

- Modular design - 1 to 7 stations.
- Body style pads - For realistic control.
- Pad height adjustment - Up to 6".
- Spring loaded pad - For recoil action.
- Durable black powder coat finish.



**The "Stack Powerhouse 90" Football Sled**

Develop tackling, blocking, hit-and-spin drills, and pass protection. Builds upper and lower body strength. Modular design lets you move stations for various drills and allows the addition of stations at a later date.

- FSP2** 2 man 🚚 Class 85, 225 lbs.....
- FSP3** 3 man 🚚 Class 85, 400 lbs.....
- FSP4** 4 man 🚚 Class 85, 515 lbs.....

- FSP5** 5 man 🚚 Class 85, 630 lbs.....
- FSP6** 6 man 🚚 Class 85, 755 lbs.....
- FSP7** 7 man 🚚 Class 85, 870 lbs.....



**Sideline Markers**

Deluxe sideline marker has foam-filled sides. Bright gold plastic-coated nylon cover. Sunproof, fadeproof, and waterproof, with black numerals. Dresses up the field and is very practical.

- FDSM** Set of 11 UPS 21 lbs.....

**Sideline Markers (Weighted)**

Eleven shot weighted base markers. Nylon reinforced vinyl with pliable, foam-filled sides help prevent injury. Fold flat for storage. 10" high white numbers on bright red background. Two markers for each yardline and one fifty-yard line marker.

- FSM11** Set of 11 UPS 48 lbs. Ships Dimensional.....

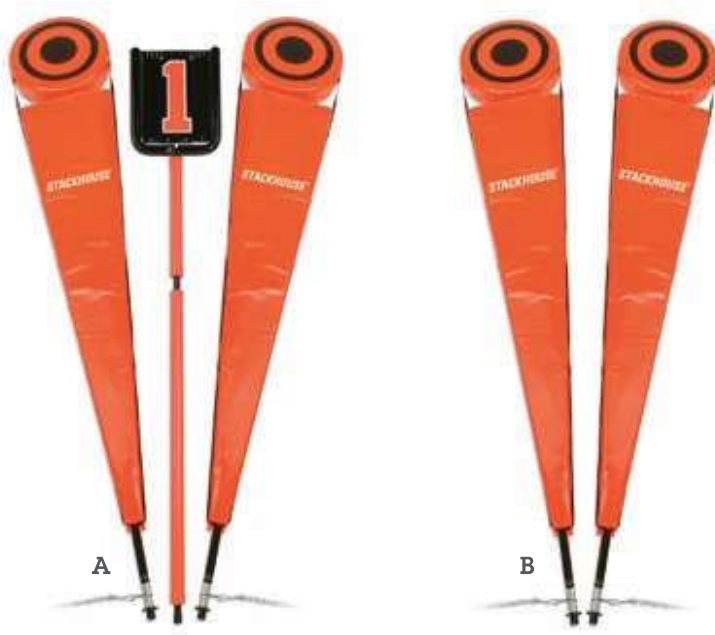


**1 Man Sled**

Designed for tackle, take down, and blocking, and for both offensive and defensive lineman drills. The best one-on-one machine around! Teaches the player to position himself naturally for the tackle.

- F1MAN** 🚚 Class 85, 280 lbs.....

Optional Football Vinyl Colors Available on page 47



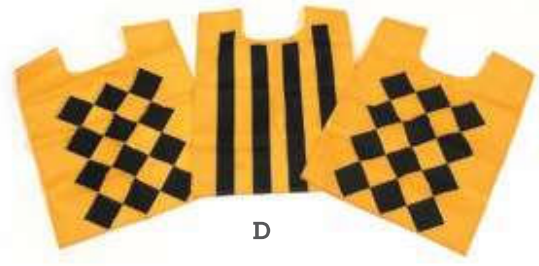
A



B



C



D



E



LFCH

**A. Lineman Chain Set**

Quality chain set has flip style down indicator with fluorescent numbers. Poles are padded and headers are made of foam filled vinyl with bright fluorescent banners. A great accessory for the home field. Set includes 2 padded chain poles with foam headers, 10 yards chain and 1 flip-over down indicator with padded upright.

**FLCS** UPS 2 pkgs. (1) 9 lbs., (1) 16 lbs.  
Ships Dimensional.....

**Down Indicator Only**

**FDI** 6' 10" tall UPS 9 lbs. Ships Dimensional.....

**B. Chain Set Only**

Chain Set only, no down indicator.

**FCS** 7' 8" tall. UPS 16 lbs. Ships Dimensional.....

**C. First Down Arrow**

Bright orange vinyl, 38" long by 10" wide and weighted for windy conditions. Set of 2.

**FDA** UPS 2 lbs. ....

**D. Linesman Vests**

Set of 3 nylon vests with adjustable velcro closure. Bright gold with black markings. Two for chain set with black diamonds, one for down box with black stripes.

**FDV3** Set of 3 UPS 2 lbs. ....

**E. Football Stencil Kits**

Numbered stencils constructed of flexible polyethylene plastic sheeting. Easy clean up! When paint dries, it simply flakes off.

**LFC** 3' football marking kit: 0-5 & G  
UPS 19 lbs. Ships Dimensional.....

**LFC6** 6' football marking kit: 0-5 & G plus arrow  
UPS 23 lbs. Ships Dimensional.....

**LFCH** 5 yd football hashmark stencil kit with 4 hashmarks  
UPS 10 lbs. Ships Dimensional.....







**F. Standard Dummy**

Long lasting, one piece foam core. Super tough nylon reinforced vinyl covering. Handles at top and bottom.

- FSTD** 12" square, 50" high, red  
UPS 7 lbs. Ships Dimensional .....
- FSTDBL** 12" square, 50" high, blue  
UPS 7 lbs. Ships Dimensional .....

**G. Roundhouse Dummy**

Core constructed of compressed urethane foam. Covering is 18 oz. vinyl coated nylon. Three handles at top. Reinforced bottom.

- FRD** 50" high, 16" diameter, red  
UPS 10 lbs. Ships Dimensional.....
- FRDBL** 50" high, 16" diameter, blue  
UPS 10 lbs. Ships Dimensional.....

**H. Professional Quality Dummy**

Firm one piece urethane foam core. Super tough 18 oz. vinyl coated nylon covering. Handles at top and bottom for reversing ends.

- FPQD** 14" square, 50" high, red  
UPS 12 lbs. Ships Dimensional .....
- FPQDBL** 14" square, 50" high, blue  
UPS 12 lbs. Ships Dimensional .....



**Oregon Linebacker Shield**

One of the most popular shields made! This 18" wide by 25" high by 4" thick shield uses a heavy duty 18 oz. vinyl over a dense urethane foam. Excellent for developing blocking techniques.

- FOS** red UPS 5 lbs. ....
- FOSBL** blue UPS 5 lbs. ....



**High Step Running Maze**

The best training aid around! The 1" galvanized steel frame adds strength and weather resistance. All elastic cross ropes are hooked on both ends for quick, easy set-up and take-down and will not entangle falling runner. 18' long by 5' wide.

- FRM** UPS 63 lbs. Ships Dimensional .....
- FRR** Replacement ropes UPS 3 lbs. ....



**Pro Kicking Holder**

- Aluminum/steel construction for balance.
- Powder coat finish.
- Folds and unfolds for easy use.

- FPKH** UPS 2 lbs. ....



**Shoulder Pad Cart**

Store either 60 or 100 shoulder pads, depending on which cart you choose. Both carts use four non-marking casters for transport. Folding pull handle makes this cart the easiest cart to use on the market. 60 pad cart measures 24" x 48" x 60" tall. 100 pad cart measures 24" x 48" x 82" tall.

- FSR6** 60 pad cart UPS 2 pkgs: (1) 30 lbs, (1) 26 lbs,  
Ships Dimensional.....
- FSR1** 100 pad cart UPS 2 pkgs: (1) 30 lbs, (1) 37 lbs,  
Ships Dimensional.....



**Helmet Rack**

Steel constructed helmet rack holds up to 60 helmets at one time. With the frame at 70" tall by 20" square, this rack fits through most any doorway fully loaded. 4 swivel casters mounted on the bottom make for easy transport and mobility. Breaks down to ship.

- FHR** UPS 2 pkgs: (1) at 21 lbs, (1) 27 lbs,  
Ships Dimensional.....

**Kicking Net**

All steel 1" construction gives this kicking net the durability and strength it needs to hold up to even the strongest kicker. Breaks down to 5 pieces for easy storage and transportation. Comes with long-lasting nylon net.

- FKN** UPS 32 lbs.  
Ships Dimensional .....

